



CLIMATE DETECTIVES 2022-2023

CEIP Juan Sobrarias Question 1 Group 1
Public School Juan Sobrarias



RESEARCH QUESTION

How does the climate change affect in the children's health?

SUMMARY OF PROJECT

1. READ INFORMATION ABOUT CLIMATE CHANGE IN A VARIETY OF LINKS PROVIDED BY THE TEACHERS.
2. COLLECT DATA IN REAL SITUATIONS.
3. ANALISE INFORMATION FROM INSTITUTIONAL DOCUMENTOS (ARAGON GOVERNMENT HEALTH DATA).
4. ORGANISE THE INFORMATION IN GRAPHICS.
5. DRAW CONCLUSIONS
6. THINK ABOUT HOW WE CAN TAKE ACTION IN OUR DAILY LIFE.

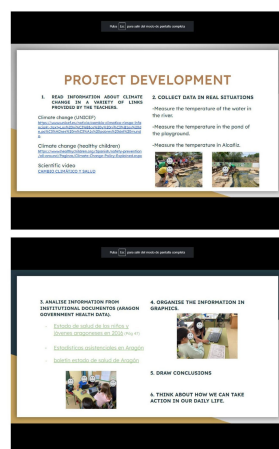


Figure 1:

MAIN RESULTS

- THE SUMMER OF 2003 WAS THE HOTTEST (SINCE RECORDS HAVE BEEN KEPT) AND ALSO THE ONE WITH THE HIGHEST NUMBER OF HOSPITAL ADMISSIONS.
- THE NUMBER OF HOSPITAL ENTRIES DUE TO HEAT SUFFERED A VERY SIGNIFICANT INCREASE IN THE HOTTEST YEARS.
- THE AUTONOMOUS COMMUNITIES WITH THE MOST ADMISSIONS IN 2015 WERE MADRID, CATALONIA AND ANDALUSIA. THESE ARE THE MOST POPULATED COMMUNITIES WITH MORE URBAN AREAS.
- THE ILLNESSES WHICH ARE RELATED WITH THE CLIMATE CHANGE AND POLLUTION ARE RESPIRATORY DISEASES.

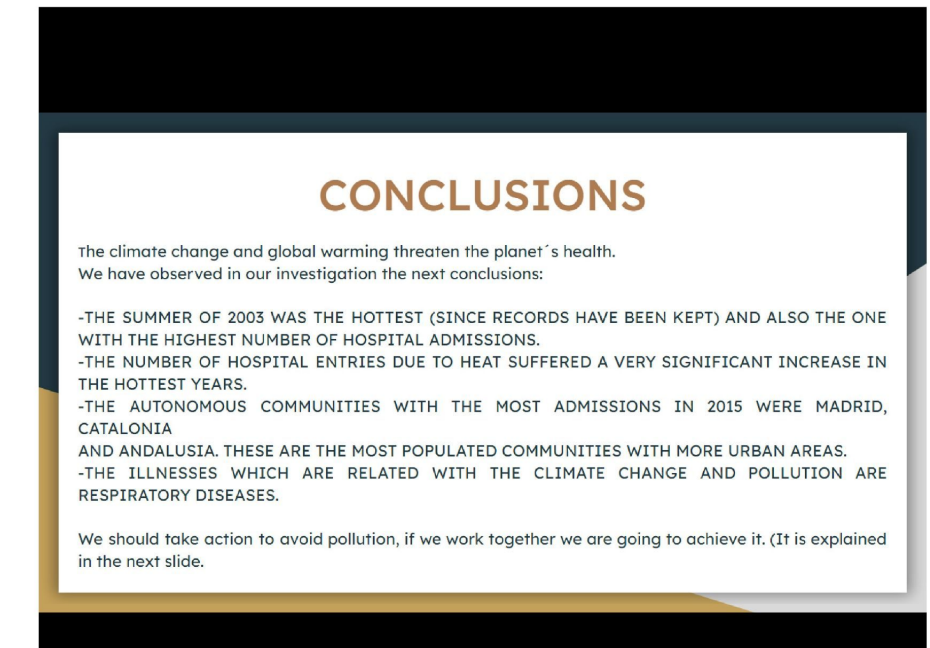


Figure 2:

ACTIONS TO HELP LESSEN THE PROBLEM

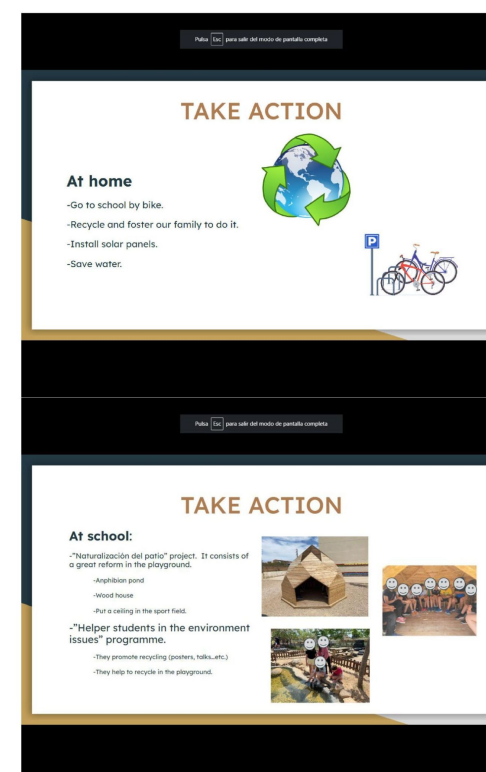


Figure 3:

- At school:
- "Naturalización del patio" project. It consists of a great reform in the playground.
 - Anphibian pond
 - Wood house
 - Put a ceiling in the sport field.
 - "Helper students in the environment issues" programme.
 - They promote recycling (posters, talks...etc.)
 - They help to recycle in the playground.
- At home
- Go to school by bike.
 - Recycle and foster our family to do it.
 - Install solar panels.
 - Save water.